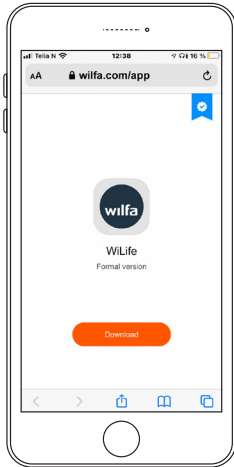


# CONNECTION METHOD

## STEP 1

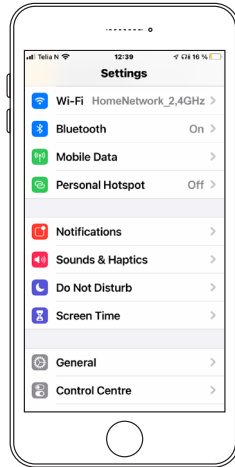
Download the app at [Wilfa.com/app](http://Wilfa.com/app)  
Or scan the QR-code.



Create a user account.

## STEP 2

Ensure Bluetooth is enabled on your phone.  
Connect to Wi-Fi  
(network requirement: 2,4GHz)



## STEP 3

Hold the on/off button for 3-5 seconds to make it searchable.

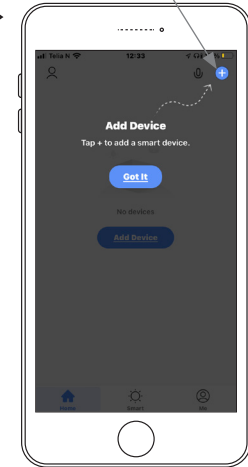


Max 10 m  
distance



## STEP 4

Open the app, and press the plus icon in the top right corner.



The option to add the device should appear automatically on the bottom of your screen.

➤ Follow further instructions on the app.

! If you experience any connection issues, please see instruction manual or contact [support@wilfa.com](mailto:support@wilfa.com)